

Shozo Azuma

Senior Vice Minister for Disaster Management
Cabinet Office, Government of Japan

Great East Japan Earthquake

Toward Reconstruction from the Tsunami Disaster

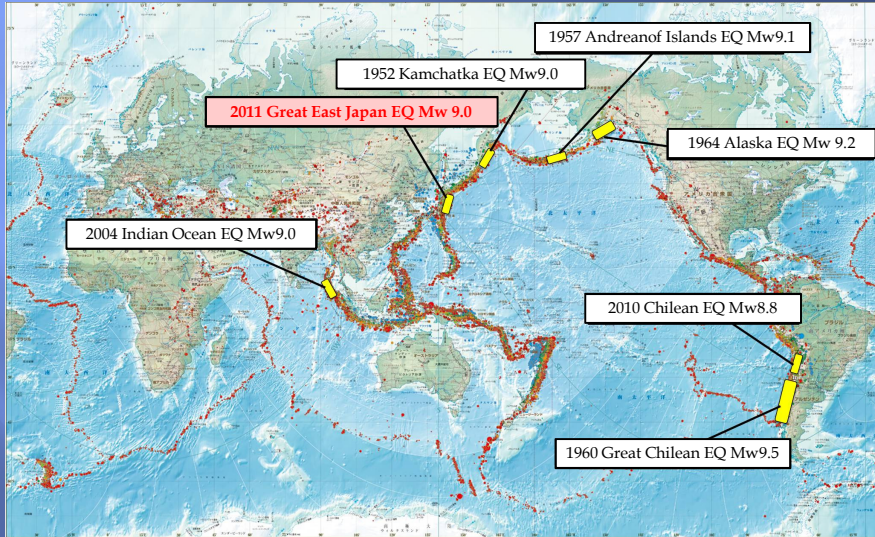
Asian Conference on
Disaster Reduction
13 June 2011, Colombo, Sri Lanka



Photo Taken at Miyako City, Iwate Prefecture
Courtesy of Tarocho Fisheries Cooperative Association

Shozo Azuma
Senior Vice Minister for Disaster Management
Cabinet Office, Government of Japan

World's Mega Earthquakes in History

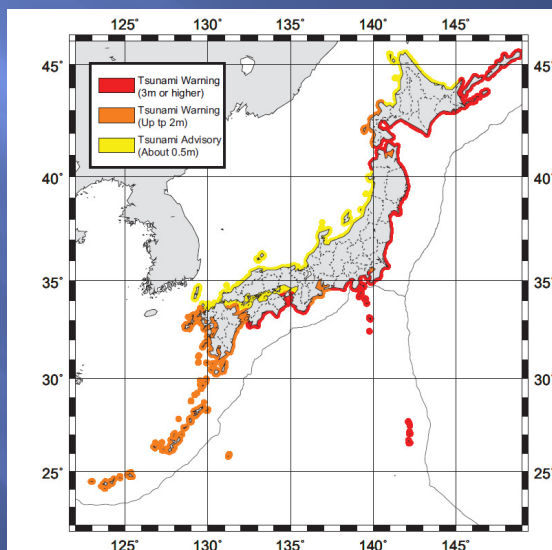


Earthquake Research Institute, University of Tokyo

2

Tsunami Warning

As at 3:20 JST, 12 March 2011 (after several aftershocks)



Japan Meteorological Agency

3

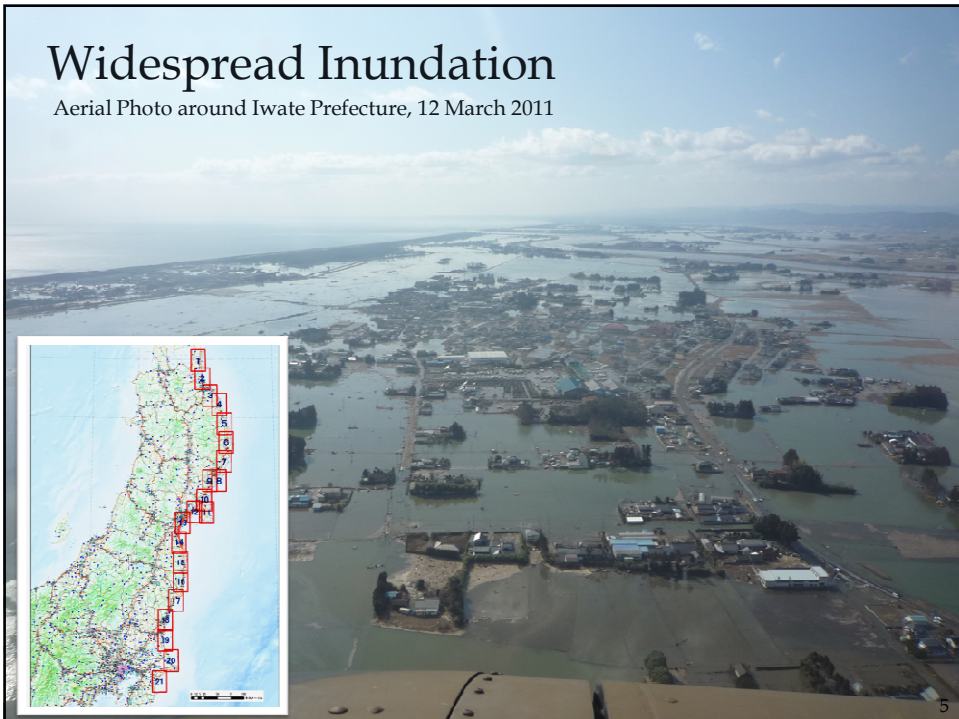
Inspection of the Devastated Areas

Miyako City, Iwate Prefecture on 26 March 2011



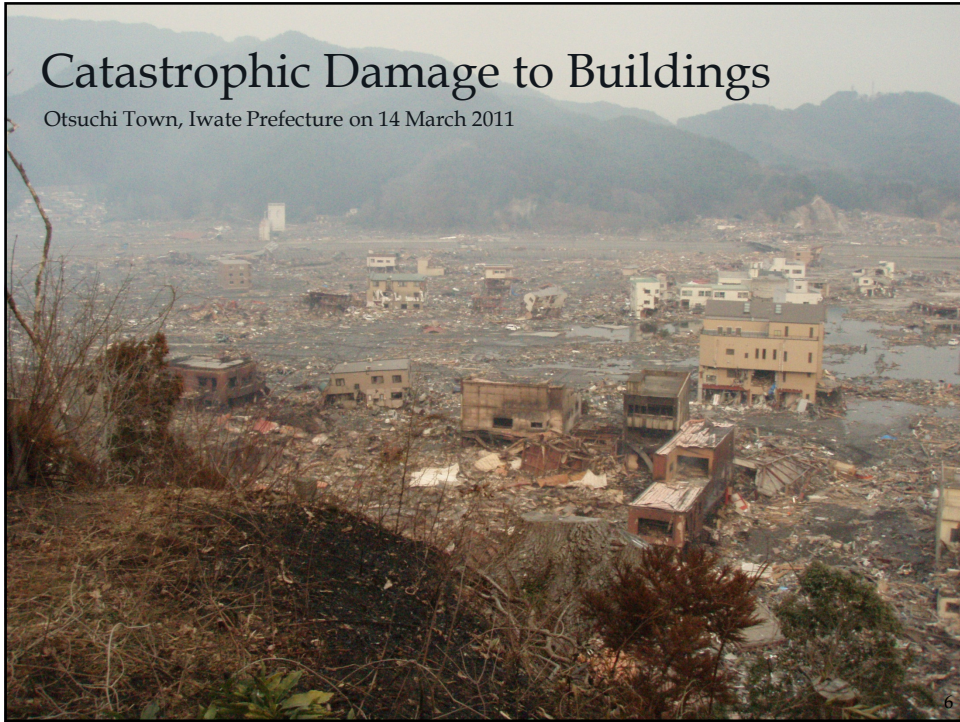
Widespread Inundation

Aerial Photo around Iwate Prefecture, 12 March 2011



Catastrophic Damage to Buildings

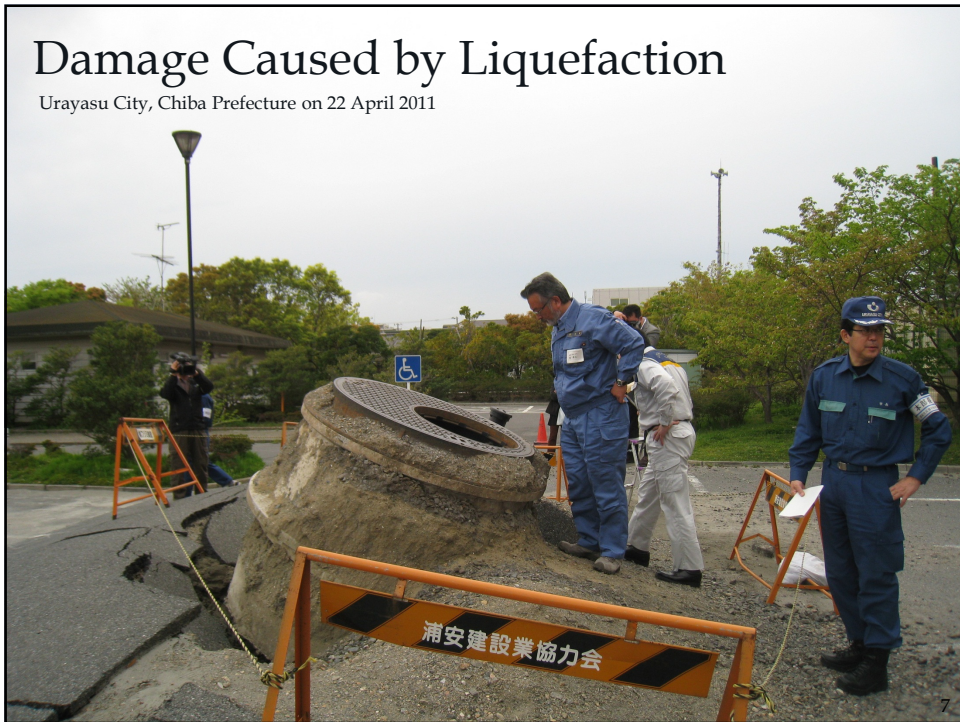
Otsuchi Town, Iwate Prefecture on 14 March 2011



6

Damage Caused by Liquefaction

Urayasu City, Chiba Prefecture on 22 April 2011



7



Cooperation of Local,
Prefectural and National
Governments
Sendai City, Miyagi Prefecture

8



Food Distribution by Japan Self-Defense Force

Photo taken at Otsuchi Town, Iwate Prefecture on 7 April 2011

9



Preparation of Meals by Volunteers

Photo taken by ADRA JAPAN, at Yamamoto Town, Miyagi Prefecture on 11 April 2011

10



Cooperation of United States Forces Japan

Photo taken by Mass Communication Specialist 1st Class Matthew M. Bradley at Misawa City, Aomori Prefecture on 19 March 2011

11

Issues for Reconstruction

1. Construction of temporary housing
2. Removal and disposal of debris
3. Revitalization of local economy
4. Streamlining existing laws / creating special laws
5. "Reconstruction Design Council" - towards full reconstruction



Photo taken at Sumitacho, Iwate Prefecture
30 April 2011

12

Reflecting Lessons to National Policy

1. Initiated deliberation at the Central Disaster Management Council
2. Toward the development of a revised national policy against earthquake and tsunami disasters



Committee for Technical Investigation on Countermeasures for Earthquakes and Tsunamis
learned from the Great East Japan Earthquake, 28 May 2011

13

“Tsunami Tendenko”

Proverb in Tohoku(Northeast) Area

It means “**immediate, individual evacuation to the higher grounds is important when a tsunami approaches**”.

Because the speed and the power of tsunami is overwhelming, people have to evacuate as quick as possible by themselves, to protect their own community.

14

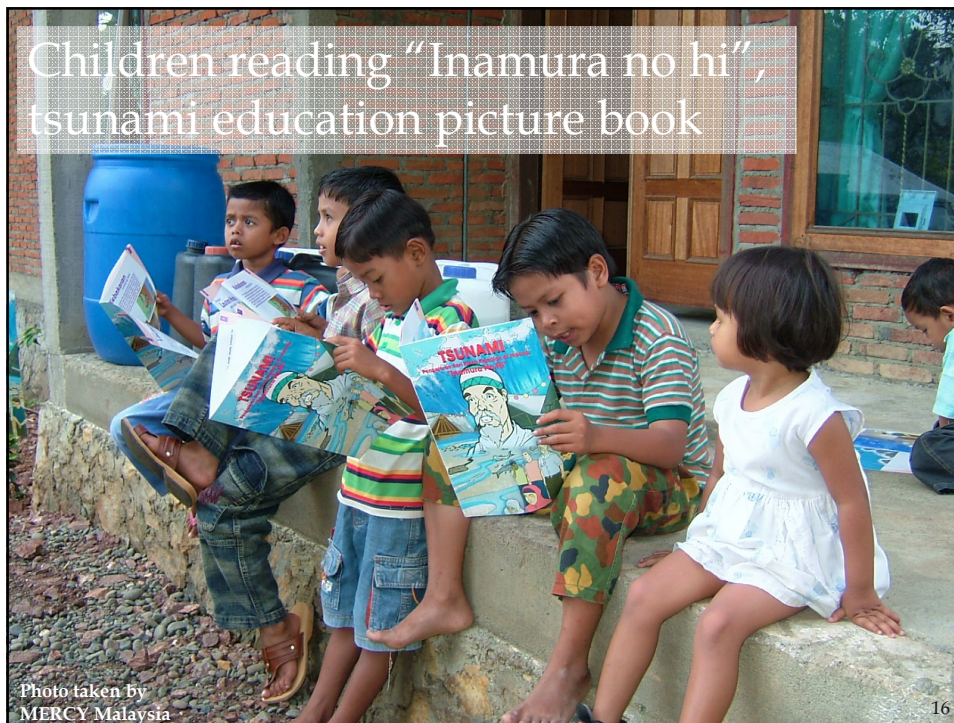
Stone Monument says: “Never build houses below this point”

Villagers who kept ancestors' precept survived from the tsunami



Aneyoshi District, Miyako City,
Iwate Prefecture
Photo taken by Minako Saito

15



Strengthening Local Recovery: Key Points for Discussion

- 1. Roles of governments at different levels:**
What roles should local, national and middle-level governments play for disaster recovery?
- 2. Various measures to reduce risks:**
How to best mix structural measures and non-structural measures?
- 3. Inheriting disaster lessons:**
How can we inherit the lessons learned from a disaster experience to next generations?

17

“The Spirit of *Tohoku*:”
Voice from the Affected Region

“Fishermen must protect the seas.”

Yoshiko Iwai, 72, reviving her fishing company
in Kesenuma

18

We can see children’s smiles again

Photo Taken at Ofunato City, Iwate Prefecture on 25 April 2011



19

Thank you for your attention.

20