

# Thailand Country Report

THANCHANOK NUNTATIKUL

Department of Disaster Prevention and Mitigation (DDPM)

Visiting Researcher FY2023



# Disclaimer

This report was compiled by an ADRC visiting researcher (VR) from ADRC member countries.

The views expressed in the report do not necessarily reflect the views of the ADRC.

The boundaries and names shown and designations used on the maps in the report also do not imply official endorsement or acceptance by the ADRC.

# Outline



**Overview of Thailand**



**Disaster Situation in Thailand**



**Overview of Thailand's Disaster Risk Management System**



**Disaster Risk Reduction Activities**



**Research Plan**



# **Overview of Thailand**



# Overview of Thailand

Thailand is located between latitudes N 5°37' to N 20°27' and longitudes E 7°22' to E 105°37', occupies the Indochina peninsula and northern part of the Malay Peninsula.

**Total Area:**  
513,115 km<sup>2</sup>

**Total Coastline:**  
3,151.13 km

## Climate:

Tropical Climate influenced by two seasonal monsoons

**Southwest Monsoon (May)**  
stream of warm & moist air

**Northeast Monsoon (Oct)**  
cold & dry air

**Summer**

**Rainy**

**Winter**

**Total Population:** 66,057,967  
**Male:** 32.2 M **Female:** 33.8 M  
**60 up:** 13 M **Disabilities:** 2.2 M



**Aged Society since 2022**

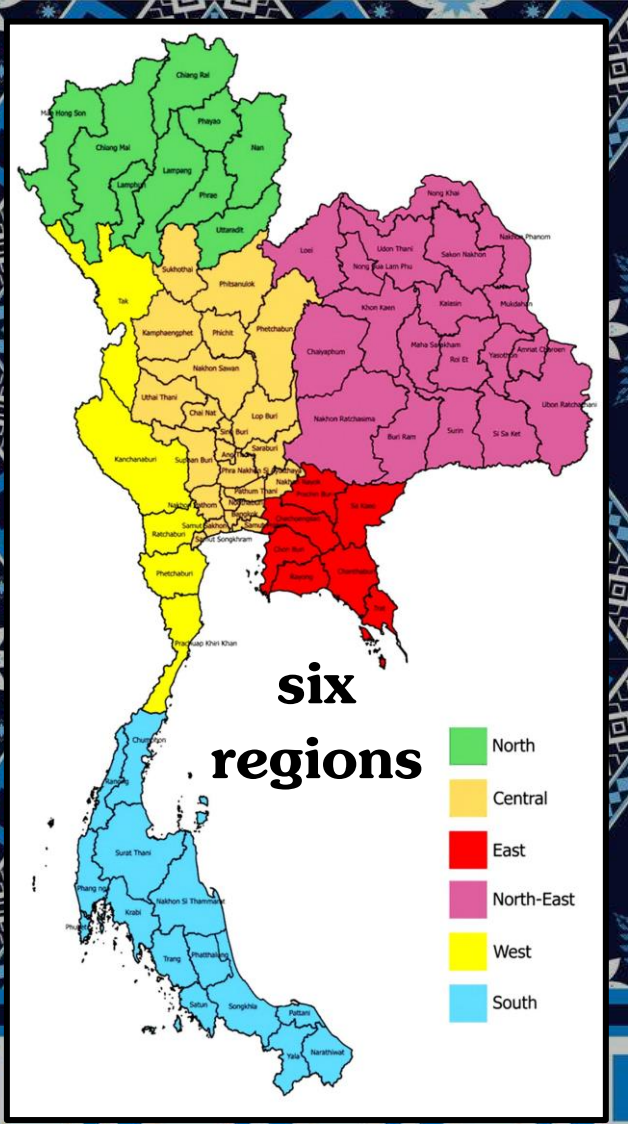
**Challenges**





# Overview of Thailand

## Administrative Divisions



### Central Administration

(centralization)

- ✧ Prime Minister's Office
- ✧ Ministries
- ✧ Bureaus
- ✧ Departments

### Provincial Administration

(deconcentration)

- ✧ 76 Provinces
- ✧ 878 Districts
- ✧ 7,255 Sub-districts
- ✧ 75,986 Villages

### Local Administration

(decentralization)

- ✧ 76 PAOs
- ✧ 2,450 Municipalities
- ✧ 5,324 SAOs
- ✧ Bangkok Metropolitan Administration (BMA)
- ✧ Pattaya City



**Disaster Situation  
in Thailand**

# Disaster Situation in Thailand

Thailand has been exposed to various kinds of disaster due to different characteristic geographies in each region.



Northern & Western: hilly & mountainous

Northeastern: plateau (high plain)

Central: low-level plain

Eastern: coastal plain & valley & small hill

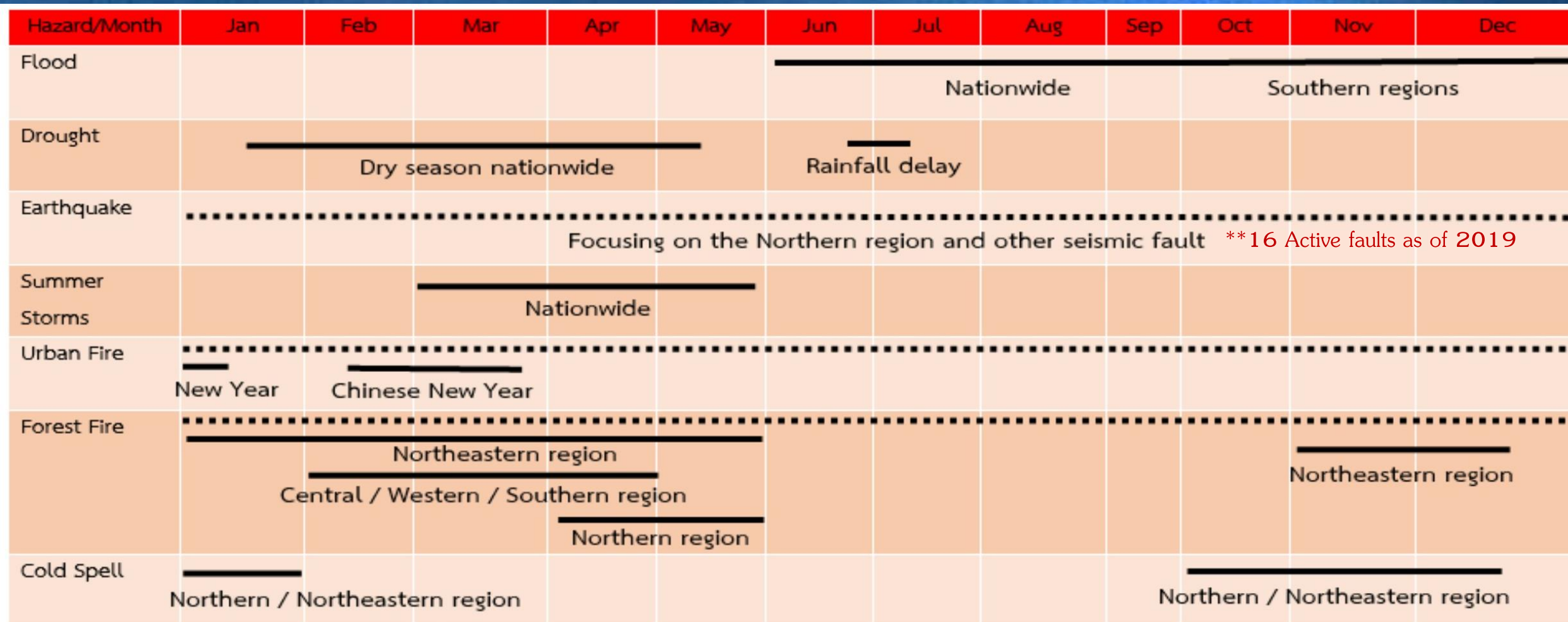
South: narrow peninsula





# Disaster Situation in Thailand

## Disaster Seasoning Calendar



..... Year - round surveillance

# Disaster Situation in Thailand



JAN - APR



MAR



JUL



JUL



MAY



SEP



NEW

DEC

## Accumulated data of disaster occurrences during 1 JAN - 30 NOV 2023

### Number of Disasters (Time)

Type	JAN	FEB	MAR	APR	MAY	JUN	JUL	AUG	SEP	OCT	NOV
flood	6	1	2	4	18	14	73	71	335	321	64
landslide	2	0	0	0	4	2	15	14	18	19	5
drought	1	0	7	14	9	4	4	12	3	6	1
storm	45	51	165	379	346	173	182	144	136	72	84
fire	428	335	356	304	251	217	220	273	182	212	228

### Impact

Total affected people  
1,206,103

	Death	21
	Injure	4
	Missing	2
	Evacuate	64

	Death	3
	Injure	7
	Missing	-
	Evacuate	-

	Death	28
	Injure	58
	Missing	1
	Evacuate	12

	Death	-
	Injure	-
	Missing	-
	Evacuate	-

	Death	75
	Injure	294
	Missing	-
	Evacuate	49



**Overview of  
Thailand's Disaster Risk  
Management System**

# Overview of Thailand's Disaster Risk Management System



**Disaster Prevention and  
Mitigation Act 2007**



**National Disaster Prevention  
and Mitigation Plan  
2021 - 2027**

# Overview of Thailand's Disaster Risk Management System



## Disaster Prevention and Mitigation Act 2007

Entry to enforce on 5 NOV 2007 as the **main DRM laws** following the lesson learned from Tsunami incident in 2004

Provide the **definition of "Disaster"**

Formulate implementing **DRM mechanism and authority** (Policy level and Operation level)

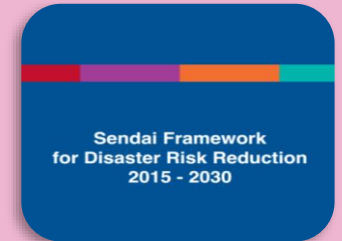
Designate the Department of Disaster Prevention and Mitigation (DDPM) as the **national focal point** for DRM

Formulate **Disaster Prevention and Mitigation Plan** in all level (National/Provincial/Bangkok Metropolitan Administration/District/Local Administration Organization)

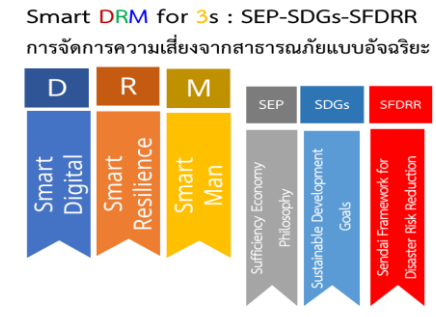
**Protection from liabilities** for all officers who perform DRM operations in accordance with this laws

# Overview of Thailand's Disaster Risk Management System

## Alignment of three levels of the plans



The concept of Global and Regional disaster-related Frameworks are integrated in the National DRM Plan



# Overview of Thailand's Disaster Risk Management System



## National Disaster Prevention and Mitigation Plan 2021 - 2027

Approved by the Cabinet on 5 July 2022 as the **master plan** of DRM

Provide **Concept of Operation** to enable all sectors including government, private and civil society sector to **collectively implement DRM activities** in an integrated and systematic manner, and in the same direction

**Vision:** Enable Thailand to effectively reduce existing and prevent new risks in order for ensuring national **sustainable security, safety and resilience**

**National DRM Policy:** 1) Implementation of **DRR** concept in all dimensions 2) Promotion of **R&D and innovation** to augment disaster resilient capacity 3) Strengthening **International Partnership Cooperation** 4) Elevation of **Emergency Management Standards** 5) Sustainable Recovery System “**BBB & Safer**”

# Overview of Thailand's Disaster Risk Management System



## National Disaster Prevention and Mitigation Plan 2021 - 2027

### DRM Strategies

DRR

#### PART 1: Effective Disaster Risk Reduction

- Strategy 1: Enhance disaster risk management capacity
- Strategy 2: Advance the effectiveness of the disaster management plan and promote the application of innovations in disaster management
- Strategy 3: Promote international DRR partnership

BBB

#### PART 2: Development of standards in disaster management

- Strategy 4: Promote effective and integrated emergency management system
- Strategy 5: Promotion of sustainable disaster recovery



# Disaster

# Risk

# Management

# Mechanism

## Policy level

National Disaster Prevention and Mitigation Committee

National Accident Prevention Committee

National Disaster Warning System Management Committee

## EOC (Emergency Operation Center) 24/7

## Operation level

Prime Minister/ Appointed Deputy PM

in case of extremely large scale disaster

National Disaster Prevention and Mitigation Command Headquarters

Central Disaster Prevention and Mitigation Coordination Center



DG of DDPM as Central commander proposes Nat. Commander/PM to upgrade the level of DM

level of DM

Level 4

Level 3  
National commander (Minister of Interior)

Level 2  
Provincial commander (Governor)

Level 1  
District/Local authority commander

Provincial Disaster Prevention and Mitigation Coordination Center

BMA Disaster Prevention and Mitigation Coordination Center

District Disaster Prevention and Mitigation Coordination Center

BMA District Disaster Prevention and Mitigation Coordination Center

Pattaya City Disaster Prevention and Mitigation Coordination Center

Municipality Disaster Prevention and Mitigation Coordination Center

SAO Disaster Prevention and Mitigation Coordination Center



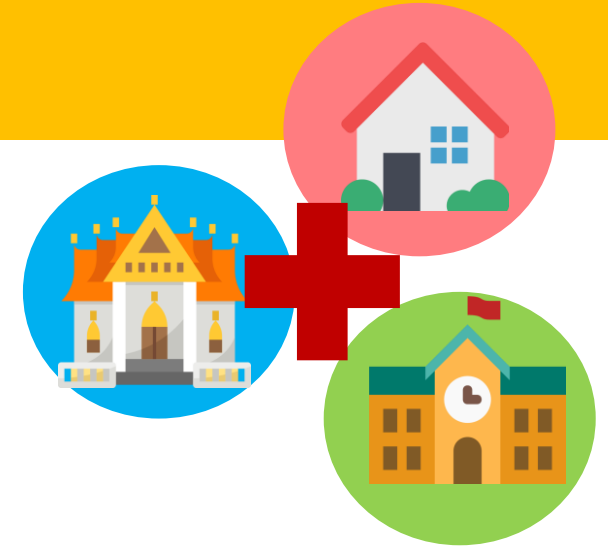
**Disaster Risk  
Reduction Activities**

# Capacity Building and Disaster Risk Awareness

Community-based Disaster Risk Management (CBDRM) is an effective approach to building capacity and encouraging the community to understand their risks and proactively develop the DRM plan in accordance with their contexts.



Since 2005 - Present, 15,000 communities are trained



Can adapt the concept to specific disaster, context, or vulnerable groups. **For example:**



Local Administration



Migrants



Wild elephant disaster

# Capacity Building and Disaster Risk Awareness



Promote the implementation of the health aspects into DRR & DRM plan in 2022

Crisis Response Conference in 2023



The 1st National Disaster Assembly in 2023



# Development of Disaster Information Collection and Database

DDPM in collaboration with UNESCAP conducted the Disaster-related Statistics Framework e-learning course in 2023.



Pause (Ctrl+P)

Sokol Vako



Sokol Vako



Piyapat Na...



Participants



# Development of Disaster Risk Communication and Multi-hazard EWS

## Social Media



## SMS: Short Message



## Broadcast Alert System



## Mobile Application



## Warning Dissemination Equipment

**Thai Disaster Alert**

แอปแจ้งเตือนข่าวภาวะสาธารณภัยจากกระทรวงมหาดไทย เพื่อที่เตรียมพร้อมรับมือภัยก่อนถึงมาถึง ในรูปแบบข้อความแจ้งเตือนแบบ Notification บนหน้าจอโทรศัพท์มือถือ

**3 ขั้นตอนง่ายๆ**

- ให้ข้อมูลส่วนตัว
- เลือกพื้นที่
- เปิด Location

**ฟีเจอร์ใหม่ บน LINE @1784DDPM "บริการแจ้งเตือนภัย"**

**3 วิธีการรับแจ้งเตือนภัย**

- กดที่เมนู "รับแจ้งเตือนภัย"
- เลือก "รับข้อมูลผ่าน Line"
- แชร์ตำแหน่งที่ต้องการรับแจ้งเตือน (Location)

เพิ่มเพื่อนในคิวิตที่นี้

**Thai disaster alert**

**Alert History**

Date from: 17/02/2023 Date to: 17/03/2023

Windstorm (4 days ago) AA6603-022

DDPM Alert for Windstorm on 13 March 2023. Alarm Level : Level 2 Monitoring (Code : Blue). During 13-14 March 2023, thundershower and gusty wind may occur in the areas Mae Hong Son, Chiang Mai, Chiang Rai, Lamphun, Lamphang, Phayao, Nan, Phrae, Uttaradit, Tak, Sukhothai, Kamphaeng Phet, Phichit, Phitsanulok, Phetchabun, Loei, Nong Khai, Kanchanaburi, Ratchaburi, Phra Nakhon Si Ayutthaya, Suphan Buri, Samut Songkhram, Chachoengsao, Chonburi, Rayong, Chanthaburi, Trat, Bangkok and its vicinity. Residents and visitors in the above mentioned areas should monitor the information and news closely. For assistance, please call DDPM Hotline 1784 or request assistance through LINE Application (@DDPMAlert). More information will be update here: <http://dalet.disaster.go.th/Map/DisasterMap.html>



ระบบแจ้งเหตุสาธารณภัย Powered by Traffy Fondue

**ขั้นตอนการแจ้ง**

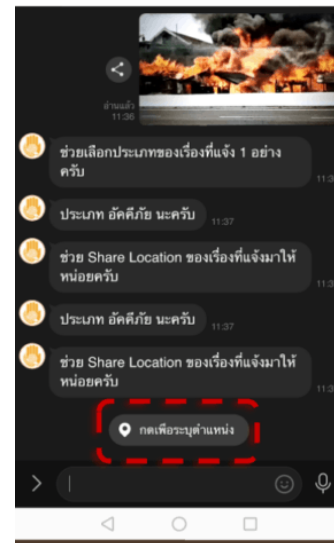
- พิมพ์รายละเอียด
- ส่งภาพประกอบ
- ส่งตำแหน่ง
- รับการแจ้งเตือนเมื่อมีความท้าวภัย

กดที่เมนู "รับแจ้งเตือนภัย"

เลือก "รับข้อมูลผ่าน Line"

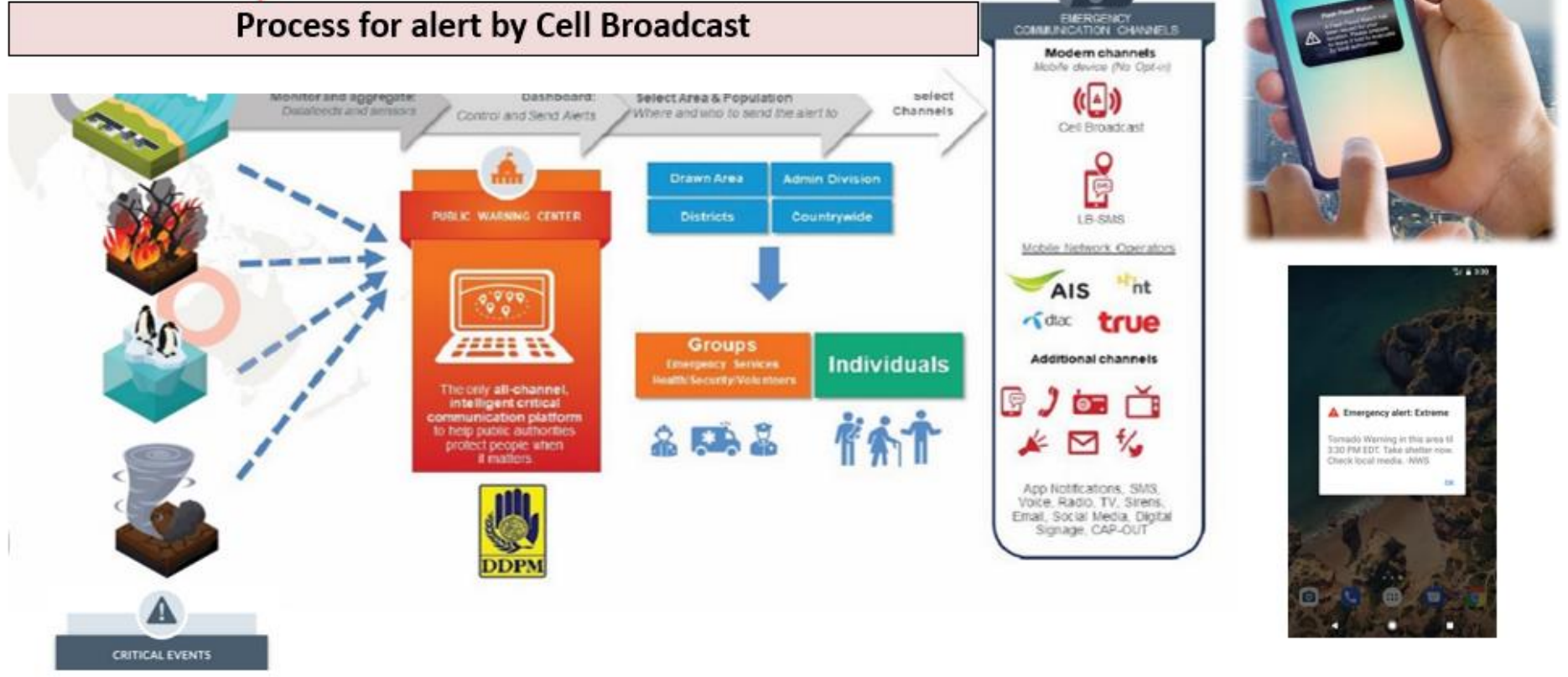
แชร์ตำแหน่งที่ต้องการรับแจ้งเตือน (Location)

เพิ่มเพื่อนในคิวิตที่นี้



# Development of Disaster Risk Communication and Multi-hazard EWS

## Next Step **Cell Broadcast**



DDPM on process to developing warning dissemination channel by Cell Broadcast to increase access to early warning information.

With Cell Broadcast it is possible to send a text message to Thousands or even million of people at the same time in near real time with specific location.



# Development of experts in various fields of DRM cycle



THA-10 (USAR Thailand) deployment in the mission of Türkiye Earthquake M7.8, February 2023. This brought THA-10 the first experience in providing humanitarian assistance oversea.

Thailand's DRM policy aims to increase human resources with expertise in line with international standards. The National Disaster Prevention and Mitigation 2021 – 2027 appoints DDPM to be the INSARAG Policy and Operation Focal Point which is responsible to develop the National Urban Search and Rescue (USAR) Team that meets the International Search and Rescue Advisory Group (INSARAG) standards. Thailand will enter the INSARAG External Classification (IEC) in the second half of 2025.





# Development of experts in various fields of DRM cycle

## ASEAN-Emergency Response and Assessment Team (ASEAN-ERAT)



**OCHA**

Office for the Coordination  
of Humanitarian Affairs



## United Nations Disaster Assessment and Coordination (UNDAC)

# Development of Resource Mobilization System to support DRM

18 DDPM Regional Centers will support resources for provincial and local administrations to perform disaster operations



# Thailand's SDGs Localization



สประชาชาติ ประเทศไทย

พิธีลงนามประกาศเจตนารมณ์เพื่อประเทศไทยที่ยั่งยืน โดยผู้ว่าราชการของจังหวัดในประเทศไทย

SIGNING OF THE STATEMENT OF COMMITMENT TO SUSTAINABLE THAILAND BY THE GOVERNORS OF THE PROVINCES OF THAILAND



As on June 6, 2022, the Ministry of Interior signed a Statement of Commitment to Sustainable Thailand to promote cooperation in driving the Sustainable Development Goals through collaboration with the United Nations Country Team (UNCT) under the theme:

**“77 provinces, 77 commitments towards the Sustainable Development Goals”** and to reinforce the intention to drive Thailand toward the Sustainable Development Goals in various dimensions concretely.

Focusing on integration of 5 key elements in the Provincial Development Plan in order to accomplish sustainable development:

**Food Security**      **Circular Economy**

**Ecotourism**      **BCG Model**

**Disaster Risk Management Localization** by applying the Ten Essentials for Making Cities Resilient





# Research Plan

# Research Plan:

## Disability inclusion in Shelter Management

### Specific Aim

- To have an insight about **standards, practices, and challenge** of Japan in preparing and managing a disability-inclusive shelter as well as **specific needs** of people with disabilities and people who take care of them
- To learn from **good examples of accessible shelter**

### Expected Results

- **Concrete practices** of disability-inclusive shelter management in Japan
- Experience of **visiting** the shelter
- **Recommendation** for Thailand on how to prepare for shelter that is accessible for people with disabilities such as **design, facilities, management**



Shelter Establishment  
and Management



To improve guideline,  
training, and exercise





**Thank you  
for  
your attention**

