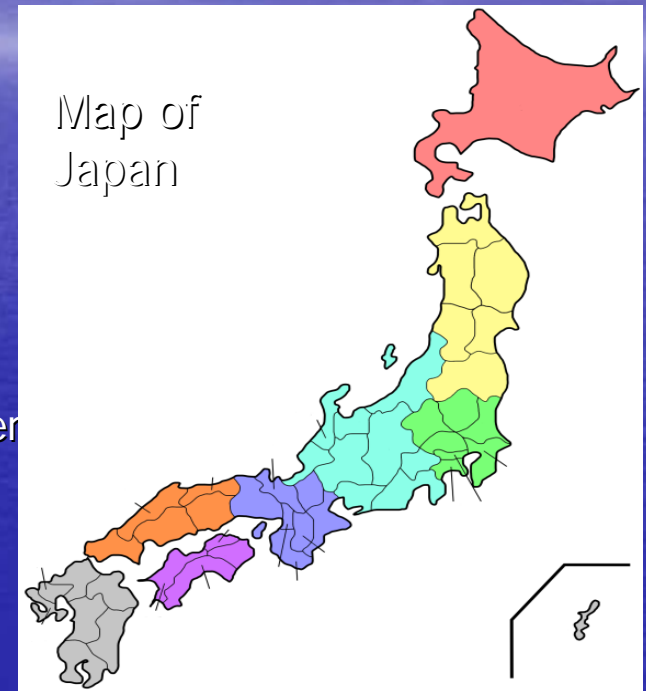


Final Presentation on VR Program July-December, 2008



Shambhu Prasad Marasini
Visiting Researcher (Nepal)
Asian Disaster Reduction Center
Kobe Japan
17 December, 2008



Outline

- Background: ADRC, VR program
- Research methodology
- Activities
- SWOT analysis of DRM of Nepal & Japan
- Suggestion for ADRC and VRP
- Acknowledgement



Himalayan Range of Nepal

Background

- ADRC was established in 1998 AD.
- To enhance disaster resilience of the member countries
- To build safe communities
- To create a society where sustainable development is possible
- ADRC is a inter-governmental Regional organization



Members

Member countries: 27

Advisor countries;5

Observer: 1



VR Program

- Started in 1999 AD
- To share information between Japan and member countries
- To expansion human networking among member countries
- To enhance capacity



First VR MR. Shimkee-oh
1999-07-23 to 1999-10-11
Korea

My objectives

- To build capacity
- To Contribute for new policy formulation
- To increase the level of understanding on DRM
- To share knowledge and experiences



Research Methodology

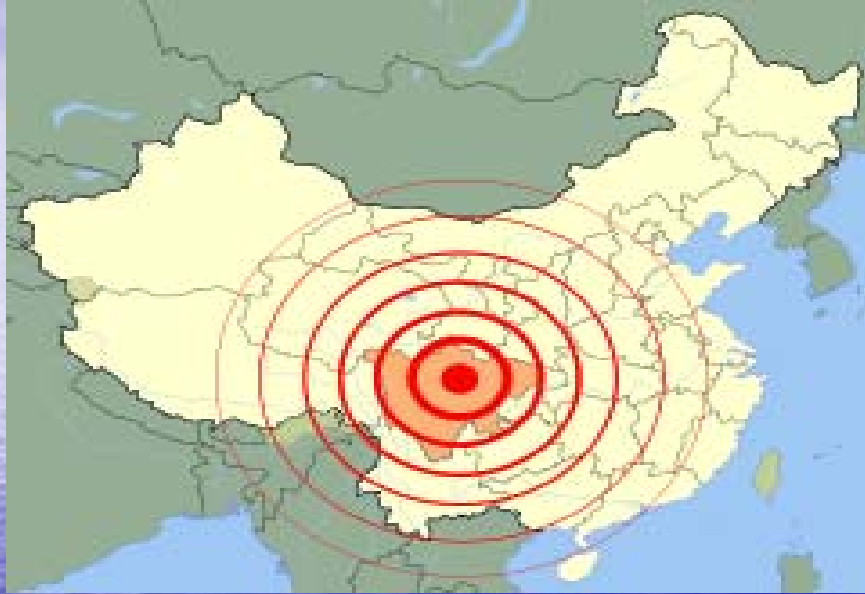
- Literature review
- Lectures
- Conference and Seminars
- Field Visits
- Collection of secondary Information and data



What Did I ?

- Preparation of country paper
- Presentation of country report

Study on disaster situation of member countries



Sichuan earthquake, China
May 12, 2008

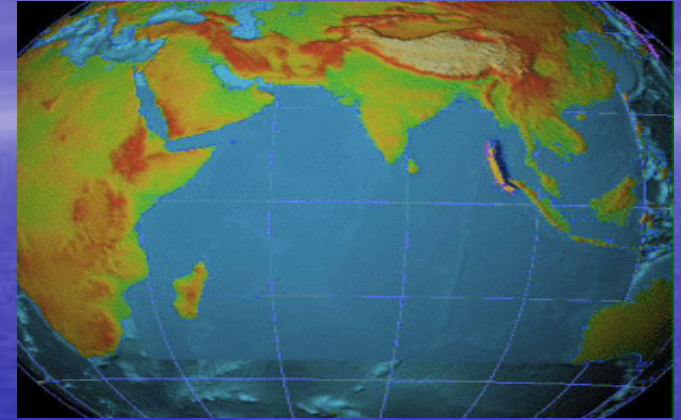


Flood in Nepal, 2008

Study about Various disasters



Great Hanshin-Awaji Earthquake, 1995



Tsunami, 2004



Flood in Nepal



Active Volcano Crater, Kumamoto,
Japan

Participated on conference,
seminars etc.



Visited Disaster Related historical and cultural places



Stone Irrigation Bridge Against Famine,
built in 1854
Kumamoto, Japan



Tsunami memorial Temple,
Sendai
(Jogan Tsunami, 869) Japan



Stone Irrigation Bridge Against Famine,
built in 1854
Kumamoto, Japan



Kobe earthquake memorial park,
Kobe port

Visited Universities, Research Institutes etc.



Kyoto University



Tohoku University



DRI Kobe

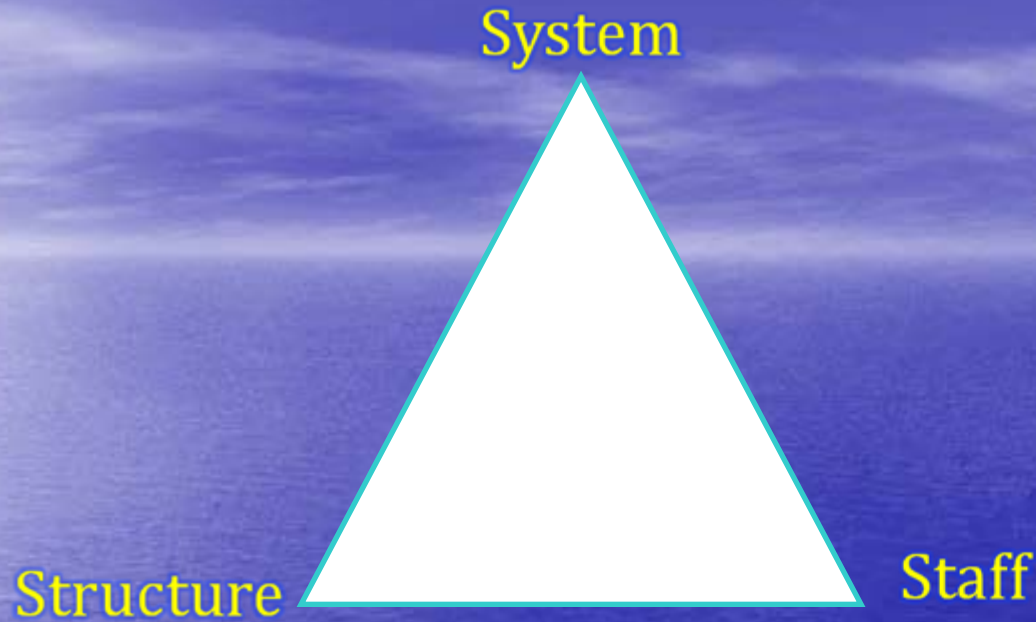


Kobe University

- Prepared Research/Study Report: Background, Natural hazards in Nepal & Japan, Present statues, Lesson learned from Field visit, Problems & issues, Summary, Conclusion and Suggestion, Bibliography
- Final presentation

SWOT Analysis of Nepal's DRM



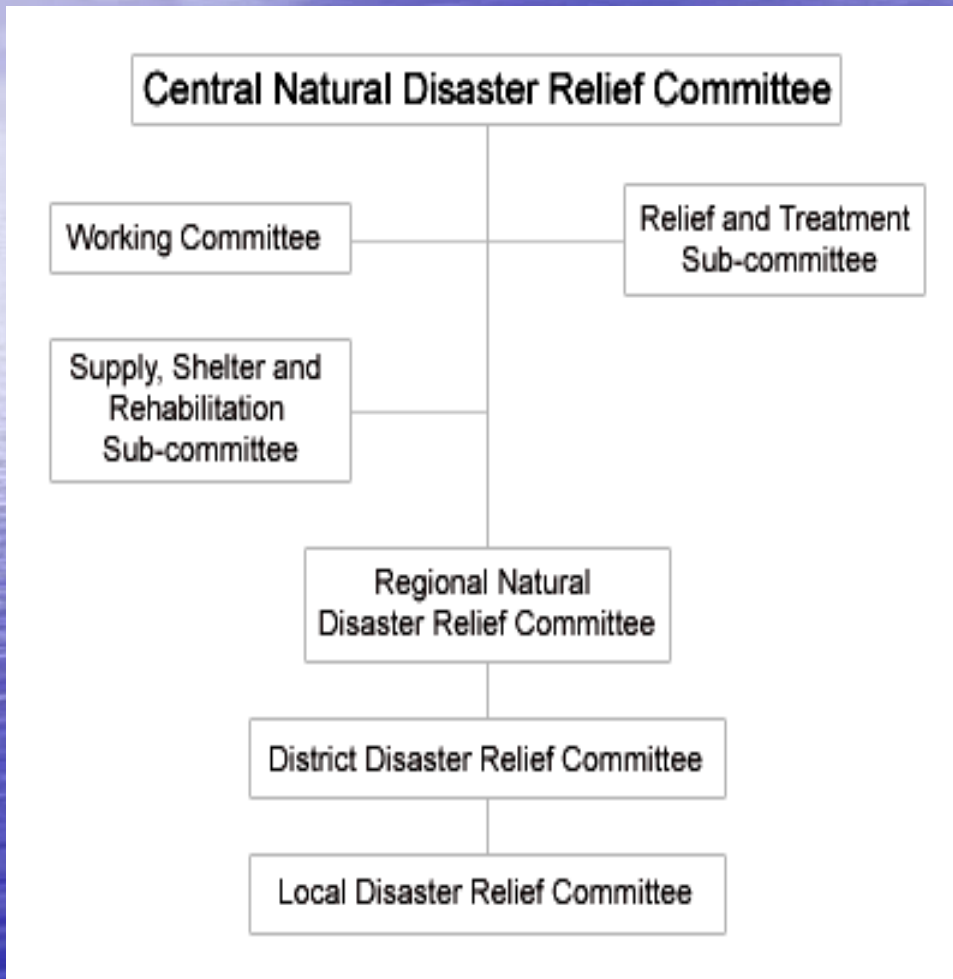


System : Policy, Law and Working Procedures

Structure : Organization Structure

Staff : Job assignment / Responsible / Accountable Personnel

Strength: Response mechanism: central to local



Rescue effort, Sunsari Flood, 2008



Relief Item for Victims, 2008

Conti.....

- Local knowledge: Snake & river don't run straight, River change its course every 12 years
- Coping capacity of community:
- National commitment on HFA, MDG and others
- New policy initiation: policy, Law, Strategy, Independent organization, National platform



Figure 20: Water pump raised on a mud and brick platform, Katarait VDC, Dhanusha District

Weakness

- No comprehensive Law: Rescue and Relief only
- No independent institution: MOHA is a National Focal Point/Nodal Agency
- Lack of professionalism: Frequently change of staff
- Lack of resources: Direct fund is only 50 million Nepali rupees per year from national budget
- Coordination: Many organization, national and International but No role define
- Information system: No computer base data system

Opportunity

- New political scenario
- Initiation for Reform:
New policy, Law, Strategy,
Independent organization,
National platform etc.
- Global Partnership:
Attention of International
community



CDF, Singapore

Threat

- Political crisis
- Climate change
- Resources



Effect of CC

SWOT Analysis of Japan's DRM



Strength

- Strong framework:
- Policy: 4 level: Basic plan, operation plan, local plan and BCP
- Structure: center, prefecture, municipality, community
- Legal: Basic Acts-7, Prevention & Preparedness Acts-18, Emergency Response Acts-3, Recovery – Reconstruction and Financial Measures Acts-23
- Resources: Approximately 5% of National expenditure (national budget), Local and other resources
- Public-private-partnership
- Total disaster management
- Active participation and strong commitment on international forum and documents



Weakness

- Scatters of resources and data: JICA, JAVA, JAXA, DMC, etc..
- Earthquake prediction: even early warning started since, 2007
- Tsunami warning cancellation
- Risk transfer: insurance policy is not sufficient
- Social inclusion: Elderly people, women and children were most affected(Death/injured) , kobe earthquake; 50% were above sixty and 60% were women
- Coordination: Even though cabinet office and DMC, Many organizations



opportunity

- Extensive researches
- Political commitment
- Modern technology
- Adequate resources
- International credit

Threat

- Confidence: Technology,
Resource, Specialist:
River control,
Construction on sea ;

Airport, high-raising
buildings

- Climate change: Could
increase water level
- Global economic crisis

Suggestion For ADRC

- Separate ACDR and Steering committee Meeting
- More efforts is needed to collect membership fee: 15 out of 27



ACDR,2008

Conti.....

- Conduct your project in coordination of member country counterpart
- Staff Meeting
- Appoint Expert/ staff from member countries also:



Suggestion for VR Program

- Reform selection process: Syndicate system with basic criteria
- Simplify application form
- Reduce duration- increase number of participation- 3 is enough
- Develop various training programs under this program



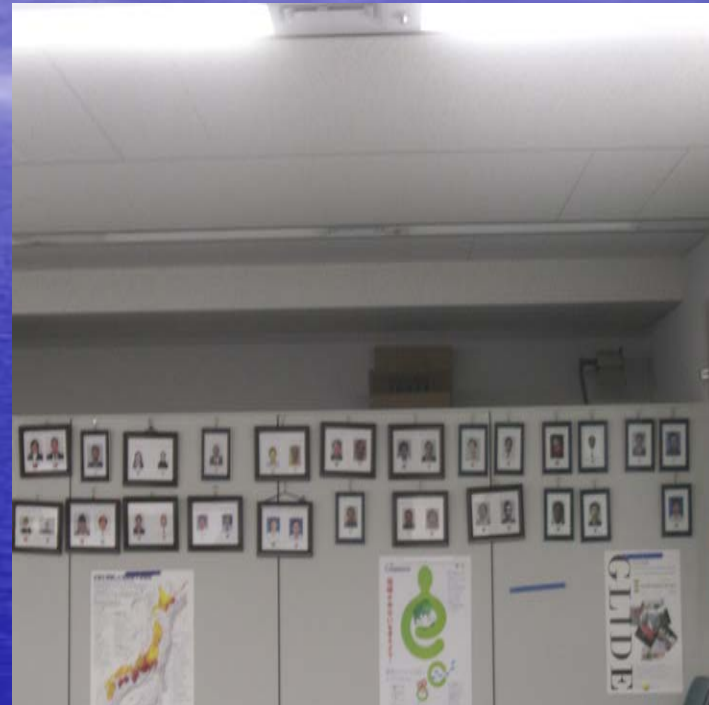
Indicator for Evaluation

Outcome evaluation: a component of evaluation

:long term

:Impact

- Number of participants: 38 from 20 member countries
- Progress on implementation of HFA
- Reform initiation by respective country
- Number of projects supported by ADRC
- Participation on ADRC activities
- Collection of membership fee



Pictures of Ex-VR, ADRC

About Multi-language Dictionary.....

- Concept is good and appreciable
- But need language Expert
- Language is a complex and some time controversial also
- Develop as a project and use language expert with collaboration of member country's counterpart: Run project in all 27 member countries at a time

My observation about office environment



OFFICE:

- ◆ Good layout
- ◆ Open
- ◆ But No chair for chairman



COLLEAGUES:

- ◆ Polite
- ◆ Friendly
- ◆ Always busy



I would like to express gratitude to SUZUKI San

- Thank you very much SUZUKI San for inviting me and guardianship during my stay



Thanks.....

- Thank you very much OHORI San for your sincere guidance, coordination and support during my tenure



Thank you Vu San

◦Being a good friend & cooperation



ACDR, 2008

I would like to Thank.....

- I would like to thank all of you (ADRC&IRP colleagues and members) for providing me homely and friendly environment,



Welcome



Thank You Very Much !!!



Arigato GozaiMaShiTa !!!

DHANYABAD !!!

